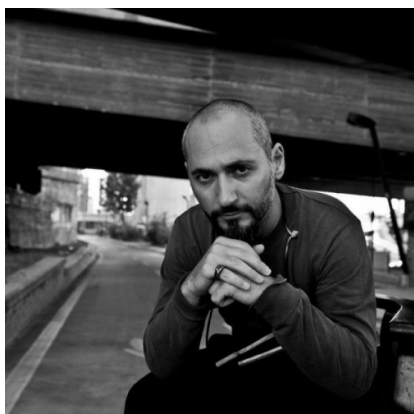


Alessandro Appignani



Compositore, pianista e direttore d'orchestra, nasce nel 1976, comincia prestissimo lo studio del pianoforte, della composizione e del violoncello, viaggiando spesso per l'Europa e venendo in contatto con la musica delle avanguardie del xx^o secolo, in un contesto intellettuale estremamente stimolante nutrito dalla frequentazione dei maggiori centri culturali europei.

Nel 1995 incontra Carlo Maria Giulini approfondendo la musica di Robert Schumann e in generale del diciannovesimo secolo.

La sua grande passione per la storia dell'arte lo porta a relazionarsi con artisti e storici, tant'è che avvia un epistolario con Federico Zeri. Appignani è interessato alle varie forme musicali e collabora con musicisti come Wolfgang Emanuel Schmidt, Yoko Kanamaru, Kate

Dillingham, Quartetto d'archi di Torino.

La sua musica è caratterizzata da una poetica unica e personale.

Composer and pianist ALESSANDRO APPIGNANI was born in 1976. As a very young child he began to study piano, composition and cello, and often moved around Europe, coming into contact with the avant-garde music of the 20th century. This stimulating intellectual background was nourished by visiting the leading European cultural centers.

In 1995 he met Carlo Maria Giulini to talk about the music of the 19th century and in particular about Robert Schumann. His passion for the history of art also brings him into contact with artists and historians, and he has had an epistolary relationship with Federico Zeri.

Appignani's works develop a unique and personal poetry. Mathematics, philosophy and mysticism are ingredients recurring in his music. Since the nineties, Appignani began to imagine a music full and free; in the wake of Alfred Schnittke he conceives a polystylism that can hold all the things he truly feels. From this experience was born his first album THE LAST BARD.

Appignani is interested in a wide variety of musical forms.